

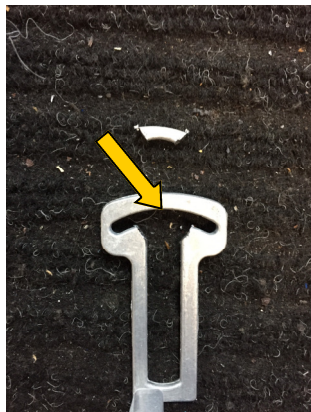
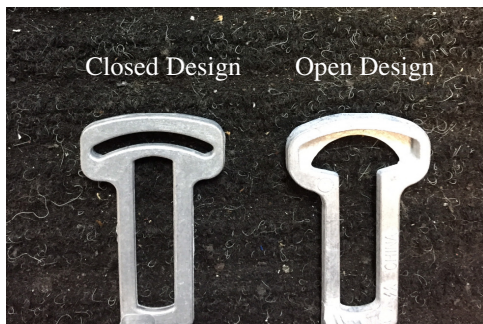
Steering Column Services

1969-1976 Rack Gear Modification

These instructions will show you how to modify the 'closed end' 7 tooth rack gear to accommodate the '6 tooth open design' requirement on some cars. The difference is in the curved end where it engages the tip of the ignition actuator rod.

The closed design used a brass tip which had a smaller ball on the end. The closed look pushed and pulled the ball tip to move the rod.

The open design used a cast aluminum tip that had a larger ball. The rack pulled the ball portion and allowed for the top edge of the rack to push the square casting of the rod.



The first step is to cut open the inside area using a hack saw blade. Cut it at a 45° angle to open as much area as possible.

Next, file the inside of the opening with a 1/2 round file enlarging the curved portion of the rack at both ends and smoothing the hack saw cuts.





Check to see if the rack modifications allow you full movement of the rack over the tip of your rod (still in the car).

If not, you may need to file or grind the top edge of the rack also to allow for a smaller outside thickness.

Finally, your rack should look like this and fit easily over the aluminum tip of your actuator rod end.

