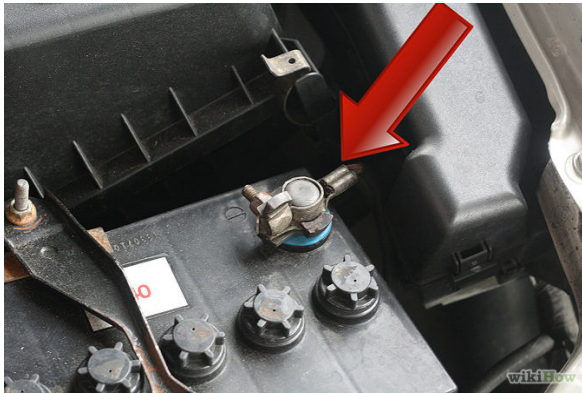


# Steering Column Services

## How to Remove a 1998-Newer Ford E & F Series Steering Column Assembly.

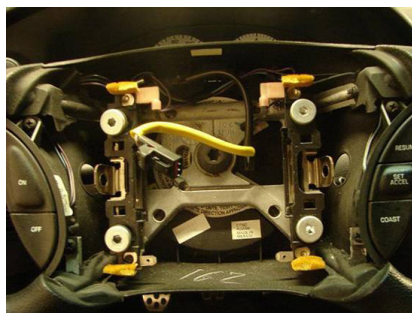
1. Disconnect battery cable **& WAIT 10 MINUTES.** This is to allow the capacitor to discharge so the airbag does not deploy by accident



2. If equipped, remove the airbag by removing the bolts that secure it to the steering wheel. Some have 4 – 10mm nuts in the back of the steering wheel cover while others have 2- 5/16” hex head bolts on each side of the wheel covered by plastic caps.



3. Disconnect the electrical connectors



4. Remove the center bolt and remove the steering wheel. You may be able to remove it by wiggling it side to side (**PUT THE BOLT BACK IN FIRST**), otherwise, use a steering wheel puller

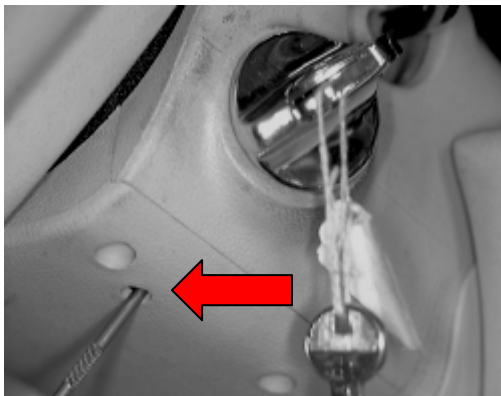


6. Remove steering column tilt release lever by unscrewing it

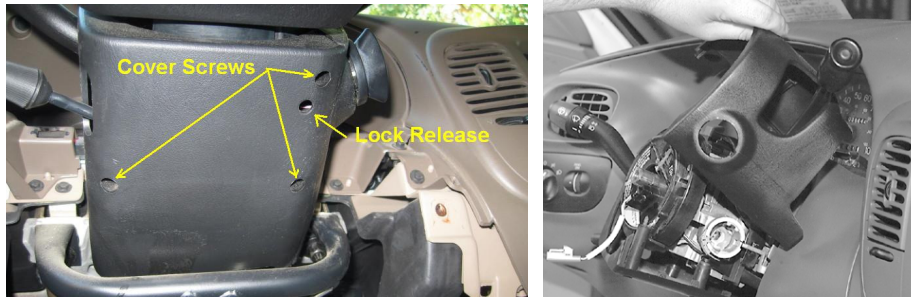


7. Turn the ignition switch lock cylinder to RUN position. Using a 1/8-inch probe or drift, press retaining pin of the ignition switch lock cylinder by locating it through access hole in lower steering column shroud. Remove ignition switch lock cylinder.

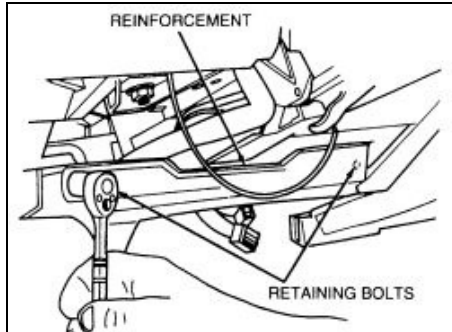
8.



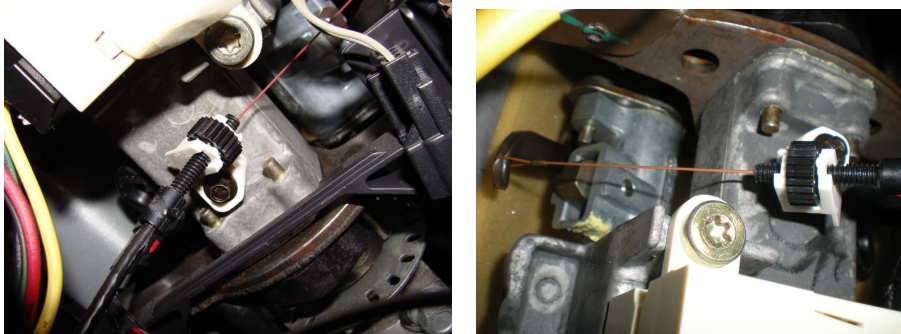
9. Remove three (or four) screws from lower steering column shroud and remove both shrouds from column.



10. Remove instrument panel reinforcement brace if so equipped).



11. Disconnect PRND21 cable **AND PLASTIC HOUSING** from steering actuator housing by removing one screw and unhooking it from the shift selector hook.

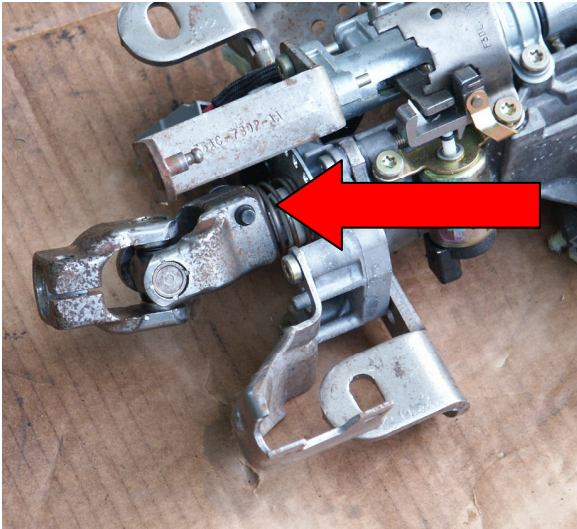


12. Remove two 20 torx screws and two electrical connectors from multifunction switch. Remove multifunction switch from steering column.

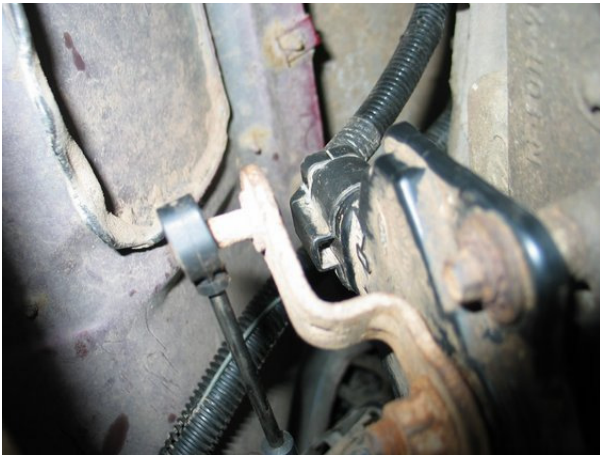




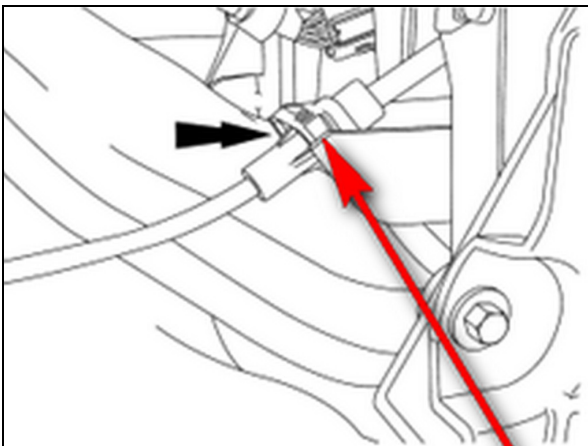
13. Remove pinch bolt from steering shaft coupling at the bottom of the column. Slide lower coupler off the end of the steering column.



14. Disconnect shift cable from shift lever pivot at the bottom of the column (above the column)



15. Remove shift cable from steering column lower mounting bracket by pushing tab on cable in and sliding cable off bracket.



16. Disconnect ignition switch by loosening bolt and removing connector. The bolt is part of connector and will not come out of the connector.



17. While supporting steering column, remove four retaining nuts.



18. Remove steering column from vehicle.

